

# Breesport Baptist Church Youth & Education Building

September 19, 2011

---

# Project Inception

---



# Project inception

---

- ▶ Began in 2009 with meetings with an architect. Original scope surrounded replacement of TTCA facility.
- ▶ Majority of work focused on facility function and site options.
- ▶ Multiple site options considered, overall consensus was that project needed to be on church site.
- ▶ Activity abandoned due to advisement of high cost.



# Project restarted

---

- ▶ November 2010– following Trustee review of current state of TTCA facility.
- ▶ Scope quickly developed into a multipurpose facility for both Church and School use, enhancing each ministries ability to more effectively function and grow.
- ▶ Building committee formed to explore building requirements and feasibility.
- ▶ Building committee members are Chuck Cooper, Larry Hubbard, Mike Harris, Chuck Wilke, Cary Shaw, Pastor Doug, Pastor Josh, Keith Martin, and Roger Phillips.



# Benefits

---

## ▶ **Benefits to School ministry**

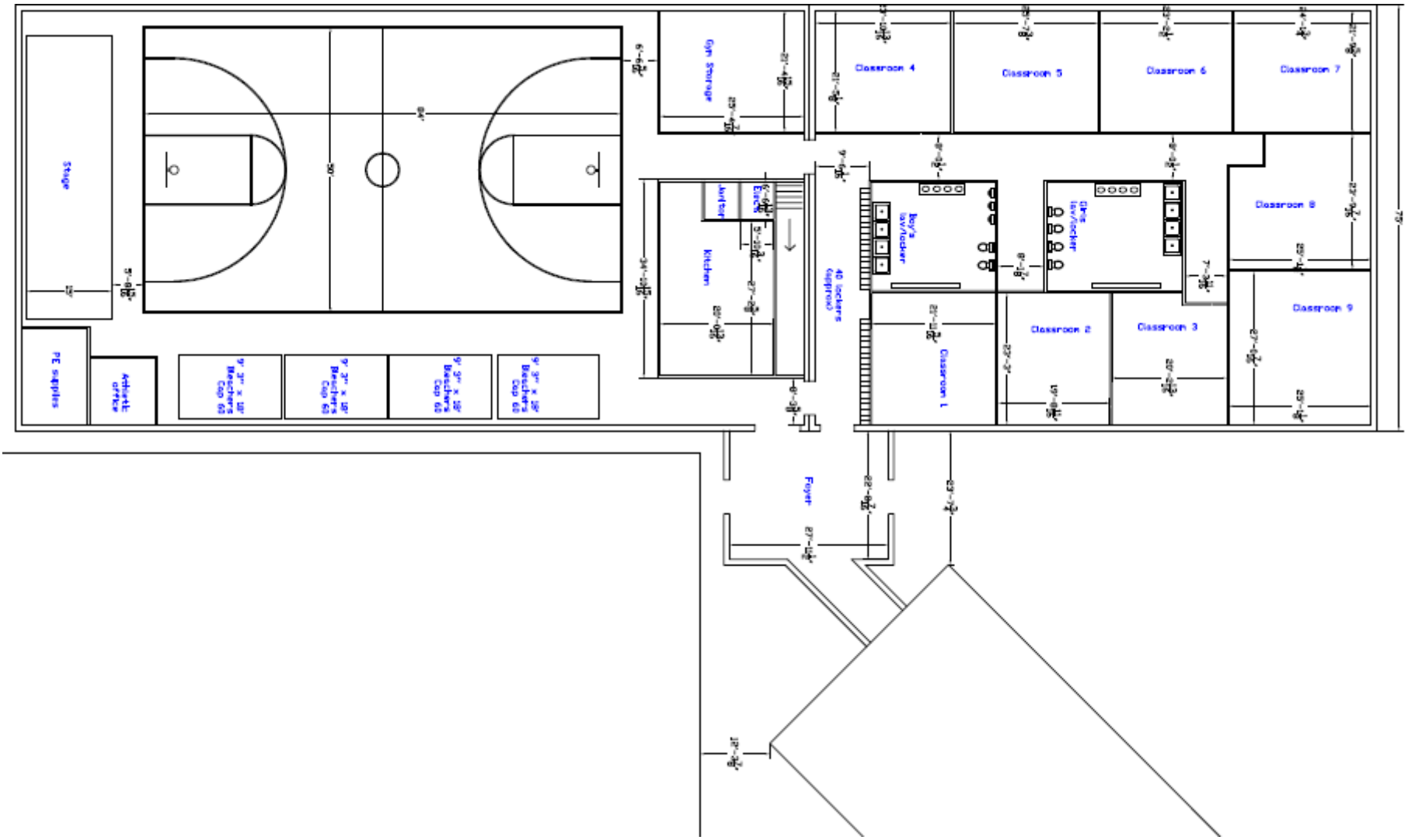
- ▶ Expanded classroom capacity: from 8 to 12
- ▶ Modern technology in the classrooms will provide educational benefits
- ▶ Updated science lab
- ▶ Full size gymnasium for an enhanced extracurricular program
- ▶ Stage with modern lighting and sound for drama presentations
- ▶ Ability to utilize Church facilities & grounds
- ▶ Reduced operating expenses
- ▶ Growth potential
- ▶ Cleaner, safer environment
- ▶ More comfortable learning environment with reliable temperature regulation
- ▶ Much more reliable physical plant
- ▶ Critical to the Future (& History) of Christian Education



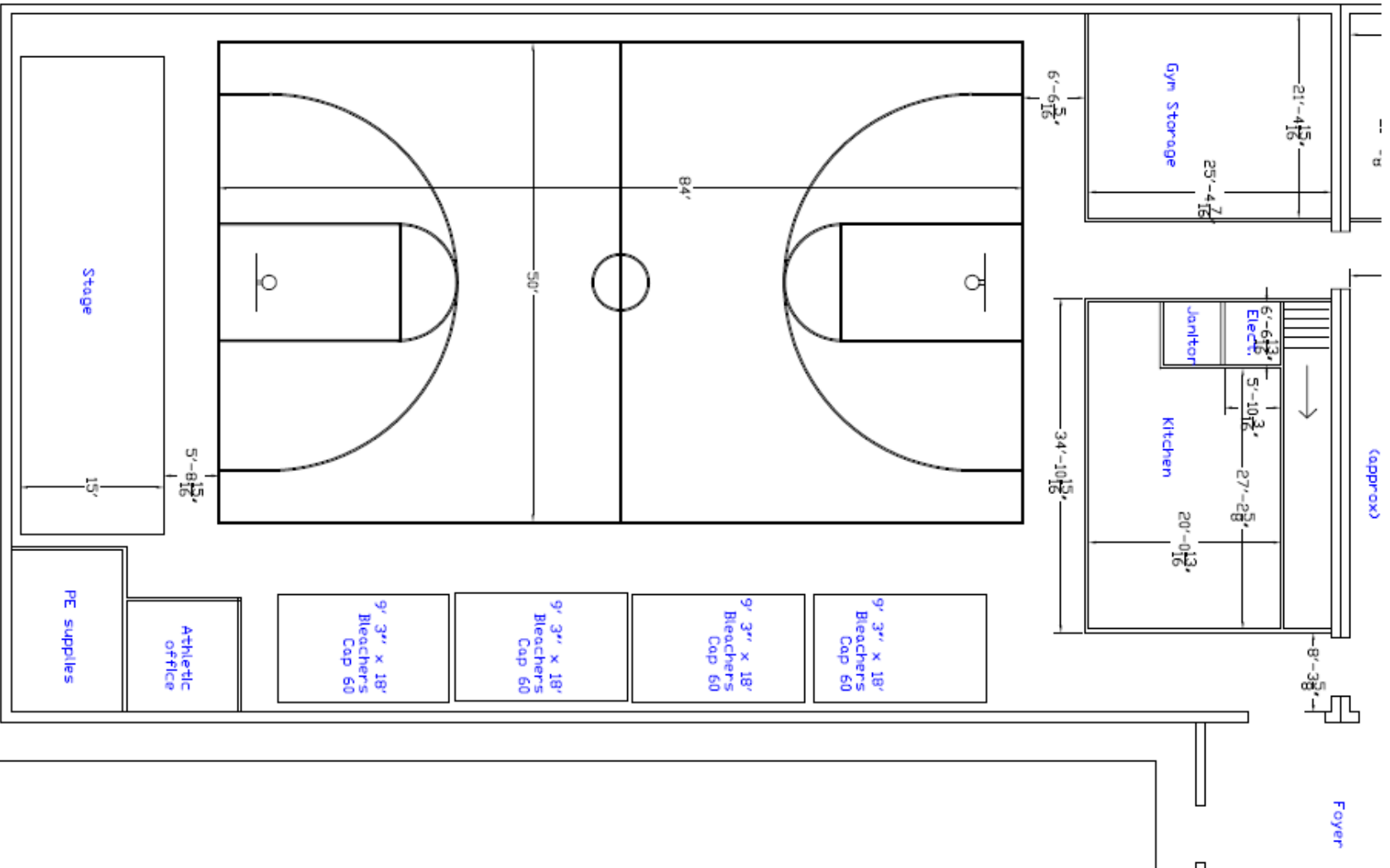
# Building plan

---

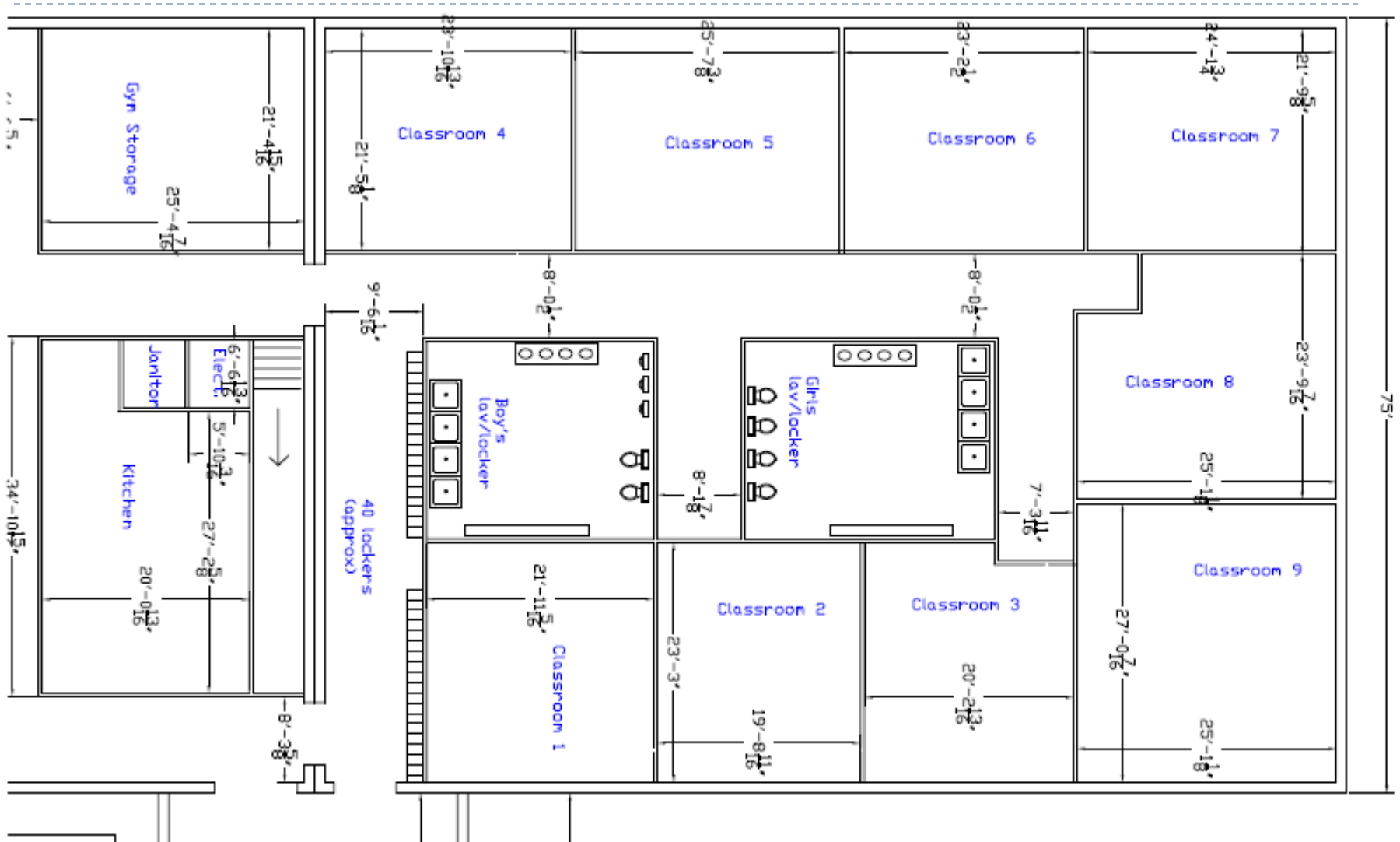




# Multipurpose room & Kitchen

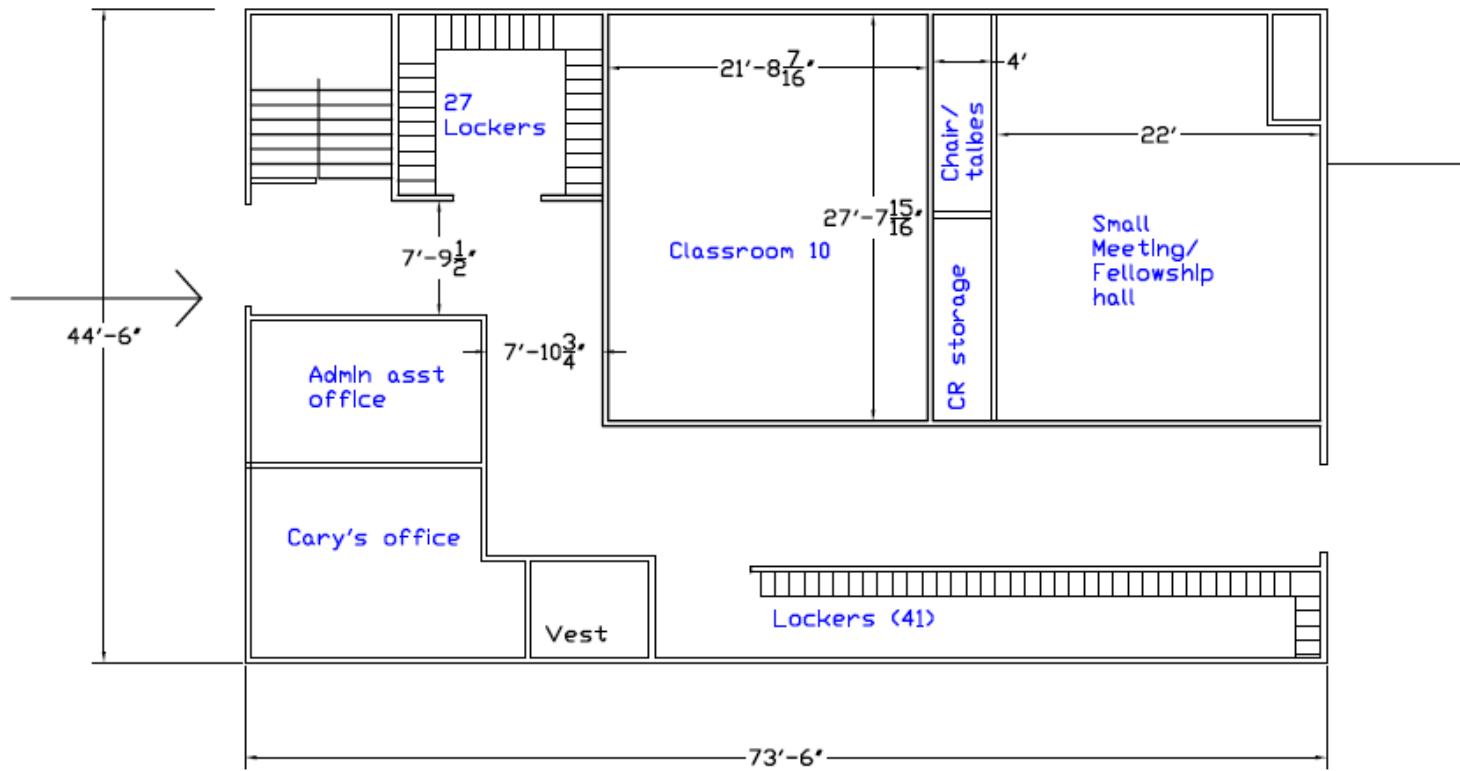


# Classrooms & lavatories/locker rooms



# Remodel of existing fellowship hall

## Main floor



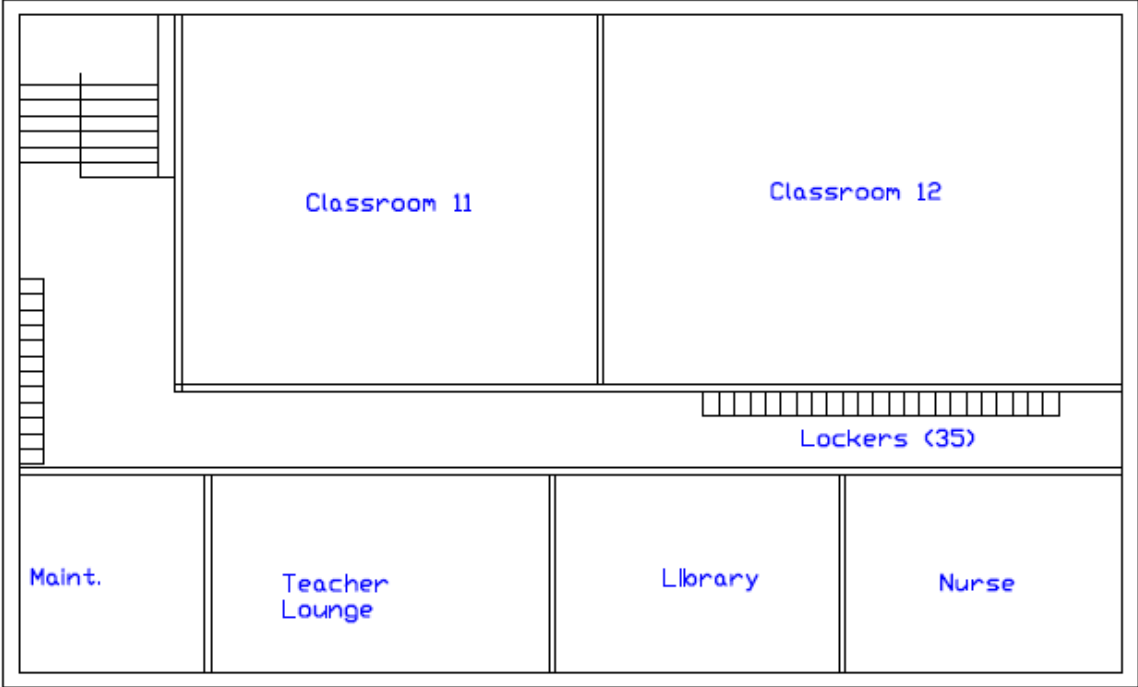
Main Floor modifications



# Remodel of existing fellowship hall

## Lower floor

---



Basement  
modifications



---

# Preliminary cost estimates

---



# Preliminary cost estimate

Item	Best Case	Worst Case
Engineering	\$30,000	\$40,000
Site preparation	\$32,000	\$62,000
Water & Septic	\$25,000	\$25,000
Building construction	\$1,066,400	\$1,276,400
Material for remodel of fellowship hall	\$33,000	\$45,000
Interior furnishings	\$63,000	\$78,000
Parking lot paving	\$120,000	\$140,000
Generis services	\$28,600	\$28,600
Contingency	\$100,000	\$100,000
<b>Total:</b>	<b>\$1,500,000</b>	<b>\$1,800,000</b>

---

# Capital Campaign

---



---

## Capital Campaign

.....Breesport Baptist voted 92% in favor of beginning a capital campaign...the first step toward erecting a 19,000 sq. ft. facility.



---

Challenge to TTCA *families, friends, and supporting & “friendly” churches.....*

**Classroom Furnishing = \$68,000 (est.)**



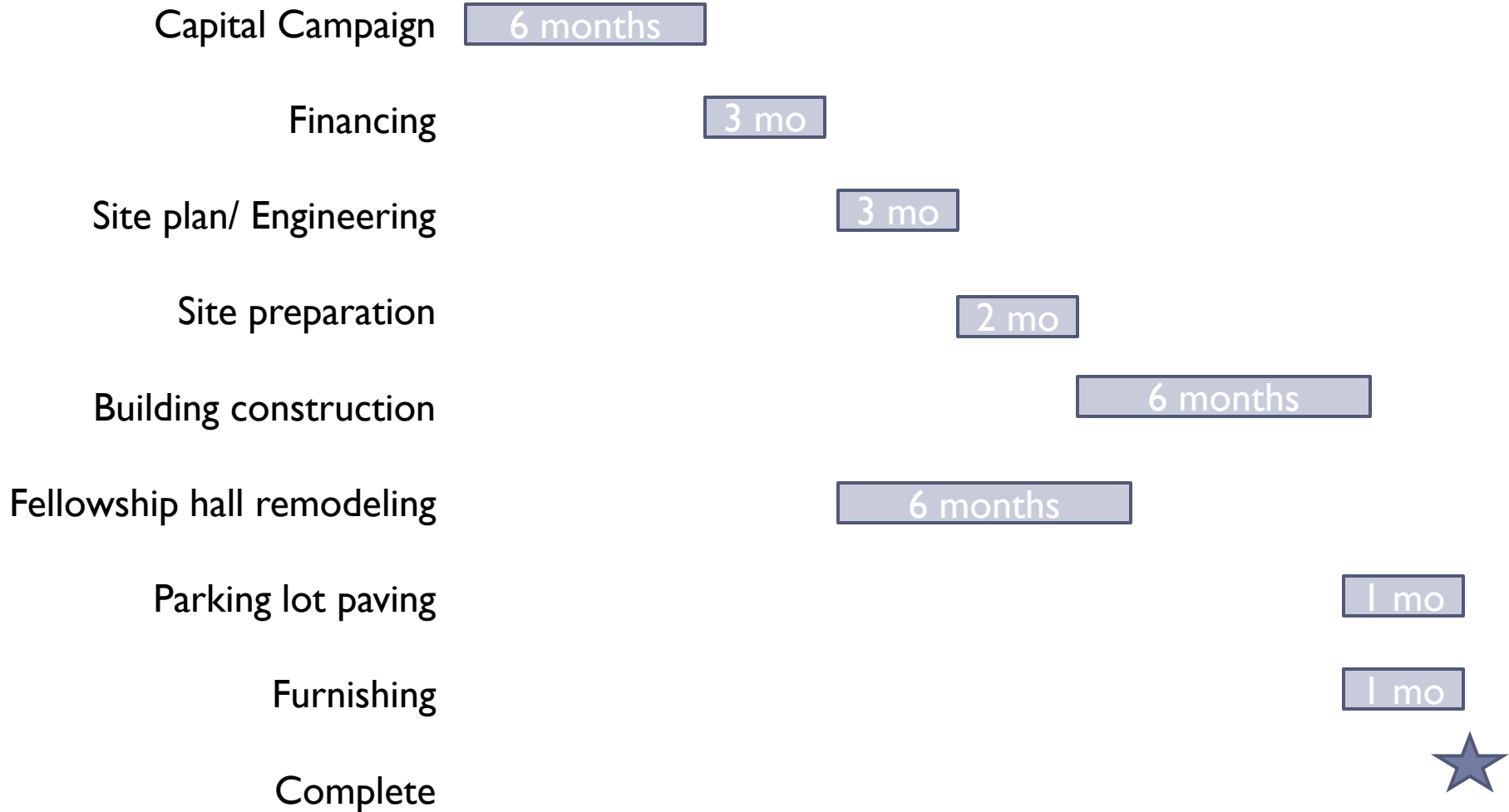
---

# Timeline



# Preliminary Timeline

---



---

**Total Project timeline: estimated 21 months**

By September 2013, Lord Willing!

---

